



enjoy - explore - enhance
your local environment

Studham Common



an Area of Outstanding Natural Beauty

about Studham Common

Studham Common, in South Bedfordshire, has been used as a common land for centuries. Today this beautiful open space is a highly prized feature of the village, valued by the community as a place of recreation and a haven for wildlife.



hazel dormouse

The common is in the Chilterns Area of Outstanding Natural Beauty and is a designated County Wildlife Site. Its rich mosaic of habitats - grassland, woodland, scrub thickets and hedgerows - supports an abundance of wildlife, including endangered and rare species such as the skylark and the hazel dormouse. Since medieval times the common was used by the local people for grazing, collecting wood and extracting gravel. More recently, the grassland areas were ploughed up for growing vegetables during World War II, destroying the local flora. The good news is that careful management since the 1960s has encouraged the return of a large number of indigenous plants along with the wildlife that thrives on them.

in this leaflet...

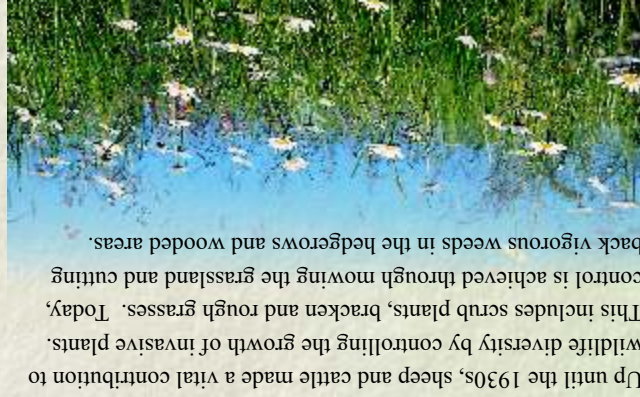
Our aim is to introduce you to Studham Common and inspire you to help conserve this rare natural asset.

In this leaflet you will find:

- a map and 45-minute guided tour of Studham Common and its wildlife
- ideas for other things to do in and around the village
- information about joining the Friends of Studham Common, your friendly local conservation group.



kestrel



The 'clay-with-flints' grassland is of special value. It is one of the few habitats of this type remaining in Bedfordshire. In summer, the meadow grasses and flowers are a wonderful sight and provide food and protection to a host of butterflies, insects and small animals.



knapweed

Over 200 plant species, 26 species of butterfly and over 20 species of bird have been recorded. Skylarks, which are in national decline, breed in the grassland area and fill the air with their beautiful song in spring.

The common's eastern boundary is an ancient hedgerow dating back at least to medieval times. It is one of only two sites in the county where the dormouse, a rare, protected species, is found.

The unusual combination of clay soil overlying chalk supports an interesting variety of plants. These offer rich habitats for a wide range of insects, birds and small mammals, some of which have been declining in numbers elsewhere.

wildlife on the common...



common blue

The common covers 68 acres divided into three areas. East and Middle Commons are mainly open grassland, bordered by hedgerows or scrub thickets. West Common, the smallest, is a mix of woodland, scrub thickets and a small playing field which serves as the village green.



badger

how to get there...

Studham lies 10km (6miles) west of the M1 (Junction 9 or 10) and the A5. It is 6km (4miles) due south of Dunstable on the B4541 and 12km (7miles) north of Hemel Hempstead, just off the A4146.

Public transport: Traveline 0870 608 2 608

P Parking: There are small car parks on East and Middle Commons (see main map)

for more information...

- Visit our website at www.foscomm.org
- E-mail us at mail@foscomm.org
- Telephone: Peter Enright on 01582 873204 or Don Grozier on 01582 872937
- To report a problem, contact South Beds District Council on 01582 472222

acknowledgements...

Photographs: by the Friends of Studham Common unless otherwise stated. Dormouse: Colin Carver/RSPB Images. Buzzard: Paul Doherty/RSPB Images. Skylark: Warwickshire Wildlife Trust. Kestrel: Paul Burnett/Nutrocker. Illustrations by Steve Halton.

This leaflet, printed on recycled paper, was produced by The Friends of Studham Common with support from John Creasey of the Greensand Trust and Steve Halton of P3. It was financed by South Bedfordshire District Council, the Chilterns Conservation Board, Bedfordshire County Council, Studham Parish Council and donations from The Red Lion PH and The Bell PH.



April 2007

the Friends of Studham Common

- raise local awareness of the common's value and support encourage wider use
 - improve public access in order to protect and enhance the wildlife diversity of the common
 - FOSC and the general public. *its main aims are to:*
- In 2001, a five-year Management Plan was drawn up by the North Chiltern's Trust, in consultation with the District Council. FOSC was formed in 1997 with 30 volunteers. Our aim is to maintain and improve the common for the benefit of wildlife and people.



blackthorn

caring for the common...

The Friends of Studham Common (FOSC), with support from the Greensand Trust, help to conserve and promote the common as a haven for wildlife and a place to be enjoyed and appreciated by all.

things to do & see around Studham

- Annual Fair every May
- Cricket, football, tennis. Playing fields
- St Mary's Church, if locked key from 01582 873257
- Studham Nursery, Clements End Rd 01582 872958
- Red Lion PH, Garry & Ann, 01582 872530
- The Bell PH, Phil & Nikki, 01582 872460
- Harpers Farm Shop, Dunstable Road, 01582 872001
- Whipsnade Tree Cathedral (NT) 01582 872406
- Whipsnade Wild Animal Park 01582 872171
- Dunstable Downs (NT) 01582 608489
- London Gliding Club 01582 663419



speckled wood

please remember...

- It is illegal to drop litter or to let your dog foul the Common - use the bins provided
- Please don't pick the flowers and note that it is illegal to dig up wild plants
- Local bye laws do not permit cars, motor bikes, lighting of fires or flying model aircraft on the Common
- Do not leave valuables in your car

if you enjoyed this walk...

If this walk has whetted your appetite, there are many other beautiful walks to explore around here. We hope this leaflet will inspire you to find out more about the Friends of Studham Common. We have a lot of fun and enjoyment with our conservation work and social activities. We warmly welcome new members.



For other walks in the area visit www.chilternsaonb.org

We warmly welcome new members of all ages and support of all kinds. Join us and help to keep the Common beautiful for everyone.

Contact:

Once a month, on a Saturday, we undertake conservation activities as recommended in the Management Plan. This includes clearing footpaths and scrub areas, restoring hedgerows, tree care and providing nesting boxes for bats, birds and dormice. We are an informal and friendly group, with regular social events and opportunities to learn about wildlife in the area. Through affiliation with Bedfordshire County Council's P3 Getting Involved we also have access to training and other conservation courses to learning how to use a brushcutter safely!



hedgerow planting

Peter Enright on 01582 873204